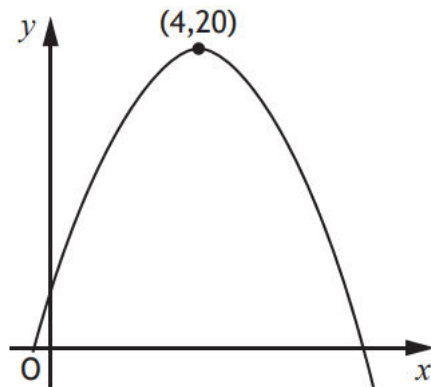


**Qualification:** SQA National 5 Mathematics 2019

**Paper:** 1 (Non-calculator)

**Question:** 9

9. The graph shows a parabola.



The maximum turning point has coordinates (4,20) as shown in the diagram.

(a) Write down the equation of the axis of symmetry of the graph.

1

The equation of the parabola is of the form  $y = b - (x + a)^2$ .

(b) State the values of

(i)  $a$

**1**

(ii)  $b$ .

**1**