

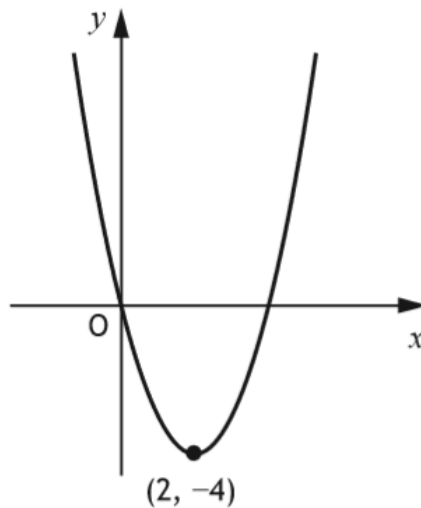
Qualification: SQA National 5 Mathematics 2015

Paper: 1 (Non-calculator)

Question: 7

7. The graph below shows part of the parabola with equation of the form

$$y = (x + a)^2 + b.$$



The minimum turning point $(2, -4)$ is shown in the diagram.

(a) State the values of

(i) a

1

(ii) b .

1

(b) Write down the equation of the axis of symmetry of the graph.

1